

FLUSH BOTTOM BALL VALVE



FEATURES

- Compact Ball type design
- Cavity filled design ensures zero fluid entrapment
- No stagnation of fluid above the ball
- Actuator mounting pad adhering to ISO 5211
- Quarter turn design ensures fast operation
- Jacketted design options for temperature requirements of specific processes
- Complete absence of cavities inside the valve ensures that there is no problem associated with deposition and solidification of fluid
- Available in various materials as per customers' specific requirements
- Anti-blow out stem design
- Sturdy, reliable and low maintenance construction

SPECIFICATIONS

Codes & Standards

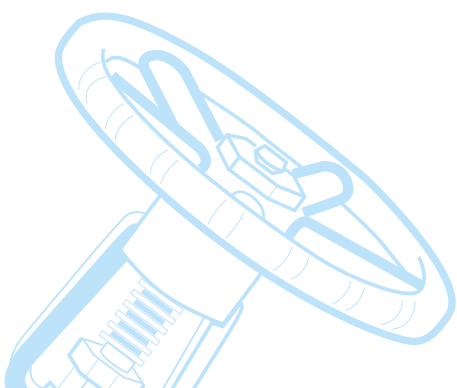
● General design & mfg	ASME B 16.34
● Face to face dimensions	Manufacturer's Std.
● Inspection and testing	BS EN 12266 Part 1 / API 598
● Flange drilling	ASME B 16.5

Technical Specifications

● Valve type	Ball Type Flush Bottom Ball Valve
● Body type	Single Piece
● Seat type	Soft Seated
● End Connection	Raised Face Flanged End
● Size range	DN 40 to DN 200
● Pressure rating	Class 150
● Operating temp. range	-25 C to 200 C
● Seat leakage	Tight shut off
● Operation	Handlever /Gear/Actuated (Pneumatic/ Electric)

Standard Material of Construction (MOC)

● Valve Body	WCB / CF8 / CF8M / CF3 / CF3M
● Ball	CF8 / CF8M / CF3 / CF3M
● Seat	PTFE / RPTFE / PEEK
● Stem	SS 304 / SS 316 / SS 316L / 17-4PH

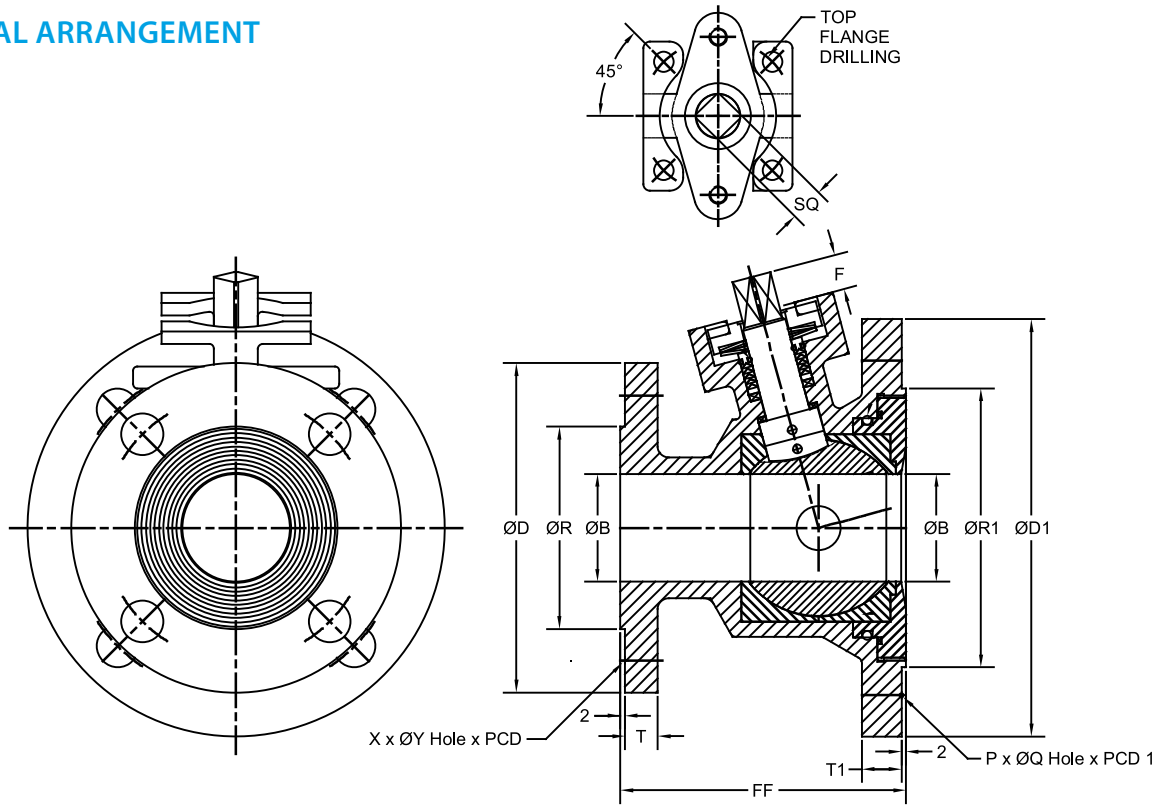




FLUSH BOTTOM BALL VALVE

Flush bottom valves are compact sized valves which can be directly fitted to the tank bottom. Widely used in Chemical, Pharma and Food sector, these valves have cavity free design to avoid product deposition inside the valve. Typically Flush bottom valves come in Carbon steel / Stainless steel material or exotic materials like Inconel and Hastalloy. IPC Flush Bottom Ball Valves are supplied in both manual and automated configuration.

GENERAL ARRANGEMENT



VALVE SIZE	FF	ØD	ØR	ØB	T	X	ØY	PCD	ØD1	ØR1	ØB1	T1	P	ØQ	PCD 1	F	SQ	TOP FLANGE DRILLING		
																		W	ØK	ØU
40mm x 50mm	110	125	73	38.1	12.7	4	15.9	98.4	150	92.1	38.1	14.3	4	19.1	120.7	11	11	4	8	50
50mm x 80mm	130	150	92.1	49	14.3	4	19.1	120.7	190	127	49	17.5	4	19.1	152.4	15.5	14	4	9	70
80mm x 100mm	180	190	127	74	17.5	4	19.1	152.4	230	157.2	74	22.3	8	19.1	190.5	24	17	4	11	102
100mm x 150mm	267	230	157.2	102	22.3	8	19.1	190.5	280	215.9	102	23.9	8	22.2	241.3	24	17	4	11	102
150mm x 200mm	292	280	215.9	150.8	23.9	8	22.2	241.3	345	269.9	150.8	27	8	22.2	298.5	43	22	4	13	125

About IPC Valves and Valve Automation

IPC offers comprehensive range of valve and valve automation solutions that meet all your needs in a reliable and cost effective manner. A long and proven track record in catering to various industrial sectors such as Chemical, Pharma, Oil & Gas, Power and Fertilizers through its solutions is the key strength of IPC.



INTEGRAL PROCESS CONTROLS INDIA PVT. LTD.

Registered Office & Works

W-55, S Block, MIDC, Bhosari, Pune - 411026, Maharashtra, India.

☎ +91 20 66304580 / 83 ✉ sales.ipc@ipcvalves.com 🌐 www.ipcvalves.com

CIN: U29120PN2010PTC136972

